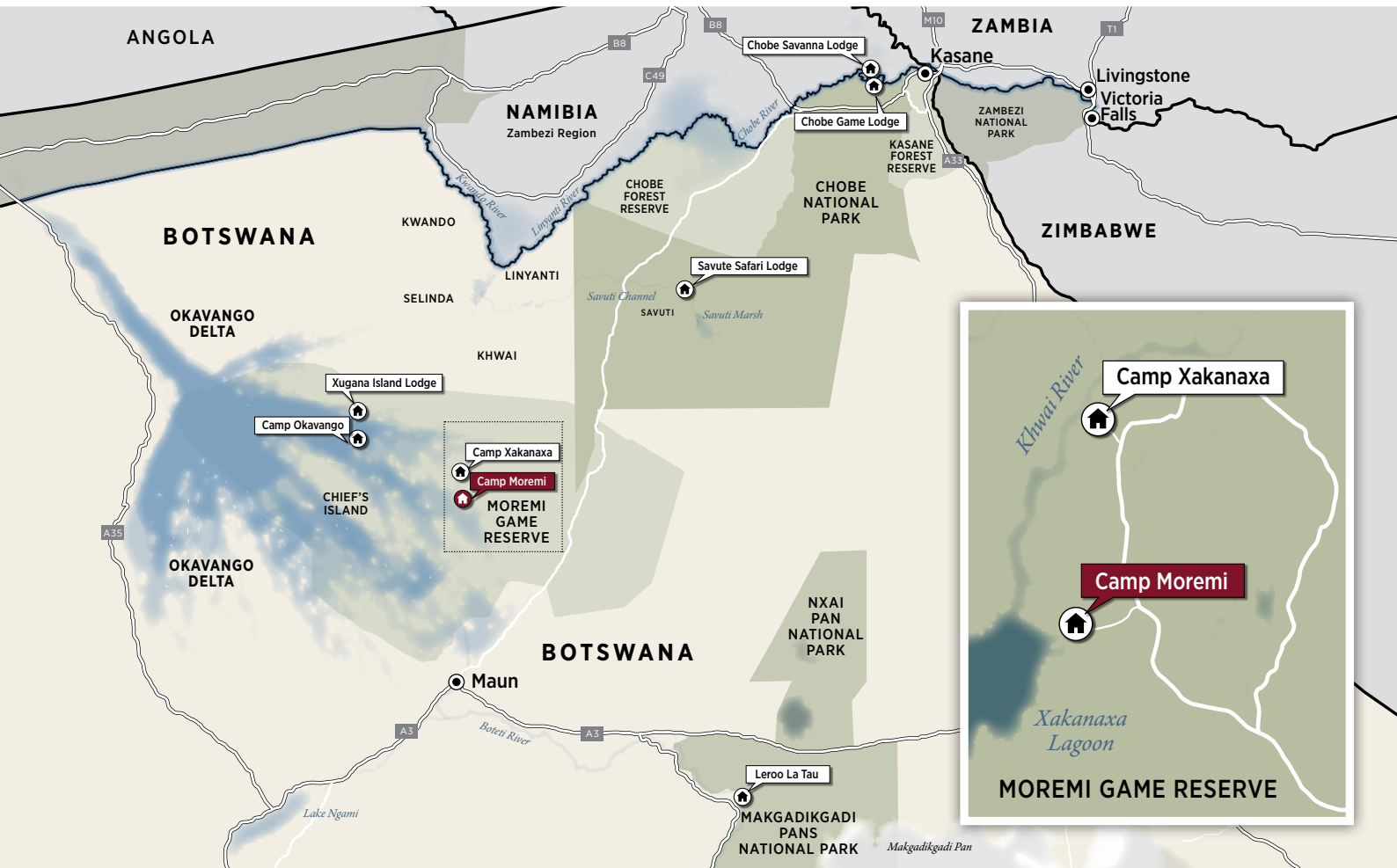




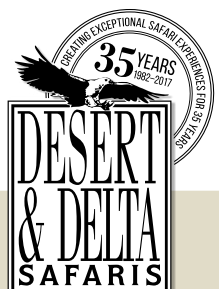
CAMP MOREMI

Moremi Game Reserve, Okavango Delta



For the classic African safari experience, look no further than Camp Moremi in Botswana's world-renowned Moremi Game Reserve. Camp Moremi is situated on the edge of the Xakanaxa Lagoon in an area well known for its spectacular game-viewing opportunities.

The Best Safari Circuit in **BOTSWANA**



CHOBÉ GAME LODGE | SAVUTE SAFARI LODGE | CHOBÉ SAVANNA LODGE | CAMP OKAVANGO | XUGANA ISLAND LODGE | CAMP MOREMI | CAMP XAKANAXA | LEROO LA TAU



THE CAMP



FACILITIES

ROOMS	11 Luxury Tents & 1 Family Tent (2 en-suite bedrooms) accommodating a maximum of 24 guests.
PILOT/GUIDE	1 x Pilot/Guide Tent (not same standard as guest rooms).
RATES	Fully inclusive of all meals, scheduled safari activities, local drinks (including alcoholic drinks, excluding premium brands) and park entrance fees
DINING	Various indoor and outdoor dining locations.
CAMP FIRE	Located in the main area of the camp sheltered by an ebony canopy.
SWIMMING POOL	On a separate deck with easy access from the main area.
VIEWING DECK	Marvel at spectacular sunsets from the lagoon-side viewing deck.
BAR	Fully stocked self service bar.
CURIO SHOP	Accepts cash and credit card payments.
LAUNDRY	Daily, inclusive laundry service available.
WATER	Reverse osmosis water treatment plant supplies drinking water (bottled water on request).
ELECTRICITY	Operates on AC 220V generator power during the day and evening. The generator is switched off at night and inverted 12-volt DC lighting provides room and bathroom illumination overnight. 220V AC plug's available in guest rooms.
INTERNET	Guest laptop available with basic internet connection in the library - there is no Wi-Fi available.
TELEPHONE	No telephone communication available. The lodge has a satellite phone and radio for emergencies.
CHILDREN	Children from 6 years and older. See Desert & Delta Safaris child policy for more information.



www.desertdelta.com

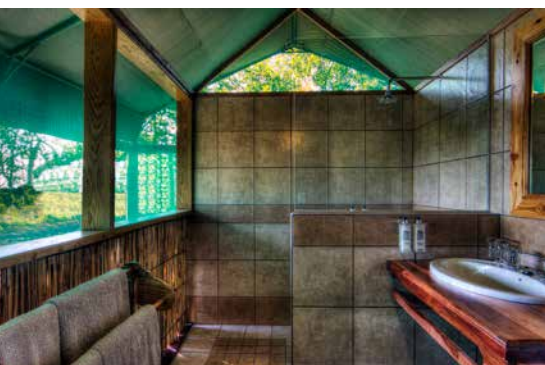
CAMP MOREMI



ACCOMMODATION

Guests will enjoy the luxurious seclusion of East African-style safari tents, each one set on a raised teak deck, each featuring an en suite bathroom. Accommodating a maximum of 24 guests, Camp Moremi ensures exclusivity and privacy in a tranquil environment.




ROOM FACILITIES	
RAISED DECKS	Each tent is on a raised wooden platform.
PRIVATE VIEWING DECK	Enjoy the views from the comfort of your private room deck.
EN-SUITE BATHROOM	En-suite showers, hand basin and toilet facilities.
FANS	Fans are available in all rooms – there is no air-conditioning in the rooms.
POWER	220V multi adaptor plugs for charging photographic equipment.
SAFE	A small pass-code protected safe for storing valuables.
FLASHLIGHT	For use in the rooms at night.
UMBRELLA	In case of rain.
AIR HORN	For use in case of an emergency.
HAIRDRYER	A small hairdryer is available in each room.
BATHROOM AMENITIES	A range of bathroom amenities including biodegradable soaps, shower gels etc.
TEA & COFFEE FACILITIES	A small kettle with tea and coffee available.





ACTIVITIES

Camp Moremi offers a range of activities focused on exploring the uniqueness of the Moremi Game Reserve.

	GAME DRIVES	Morning and afternoon game drives to explore the many different ecosystems that the Moremi Game Reserve has to offer.
	MOTORISED BOAT SAFARIS	Explore the Xakanaxa Lagoon and its surrounding channels by boat for a chance to enjoy the picturesque waters of the Okavango Delta, in hard-bottom aluminum boats. The boats are equipped with comfortable seats, a foldaway canvas roof and life jackets.
	BIRD WATCHING	The majestic Fish Eagle and vivid Malachite Kingfisher are frequently seen and even the rare Pel's Fishing Owl makes an occasional appearance, to the delight of guides and guests alike.

TYPICAL DAY ON SAFARI

Please note the below suggested daily program is flexible based on the guests interests, travel times and availability of activities.

WINTER TIMES	SUMMER TIMES	ACTIVITY
05:30	05:00	Early morning wake-up call.
06:00	05:30	Light continental breakfast served in the dining area.
06:30	06:00	Leave for morning activity, (approximately 3 - 4 hours).
11:30	11:00	Brunch is served at the dining area.
SIESTA TIME		Relax and enjoy the lodge facilities and surroundings.
15:00	15:30	Afternoon tea is served on the open air patio.
15:30	16:00	Depart for afternoon activity (approximately 3 hours).
18:30	19:00	Arrive back at the lodge.
19:30	20:00	Dinner is served at the dining area.



www.desertdelta.com

CAMP MOREMI



ACCESS TO CAMP MOREMI

Camp Moremi is accessed by light aircraft transfer or 140kms from Maun on sandy roads suitable for 4WD vehicles only, approximately a four hours' drive. The Xakanaxa airstrip is owned by Desert and Delta Safaris, a Chobe Holdings Company. Flights to and from Camp Moremi are scheduled based on the travellers itinerary. Once at the airstrip, there is a road transfer of approximately 25 minutes to camp.

AIRSTRIIP DETAILS

STRIP GPS CO-ORDINATES	S19° 11' 19.96 E023° 24' 30.48
CAMP GPS CO-ORDINATES	S19° 12' 51.85 E023° 25' 56.0
LENGTH	900m
LICENSE	CAAB Licensed Class B airstrip accommodating aircrafts up to MAUW 5700kg's (Cessna Caravan).
PRIVATE CHARTERS	Prior consent from Desert & Delta Safaris is required before landing private aircraft on the airstrip.



Maun

ESTIMATED FLIGHT TIMES Between Camps & Airports

25	Camp Okavango				
30	5	Xugana Island Lodge			
20	10	10	Camp Moremi / Camp Xakanaxa		
40	30	25	25	Savute Safari Lodge	
30	45	45	40	50	Leroo La Tau
70	60	60	55	30	65 Kasane



RESERVATIONS OFFICE

TELEPHONE (+27) 11 394 3873
E-MAIL info@desertdelta.com

MARKETING OFFICE

TELEPHONE (+267) 6861559
E-MAIL marketing@desertdelta.com
ADDRESS Private Bag 310,
Maun, Botswana
WEBSITE www.desertdelta.com

▶ View Desert & Delta Safaris Video



The Best Safari Circuit in **BOTSWANA**

CHobe GAME LODGE | SAVUTE SAFARI LODGE | CHobe SAVANNA LODGE | CAMP OKAVANGO | XUGANA ISLAND LODGE | CAMP MOREMI | CAMP XAKANAXA | LEROO LA TAU

f t i www.desertdelta.com